

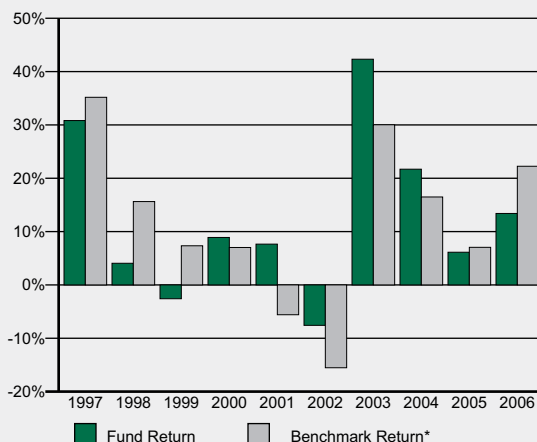
INVESTMENT OBJECTIVE

The investment seeks current income and long-term growth of income, as well as capital appreciation. The fund normally invests at least 80% of assets in common stocks of large capitalization U.S. companies. Large cap companies are considered to be those with market capitalizations like those found in the Russell 1000 index. It also invests in stocks with high cash dividends or payout yields relative to the market.

PORTFOLIO CHARACTERISTICS (as of December 31, 2006)

Fund Inception Date.....October 26, 2001
 Total Assets in Class (\$MM).....\$3053.1
 Expense Ratio.....1.22%

ANNUAL TOTAL RETURNS

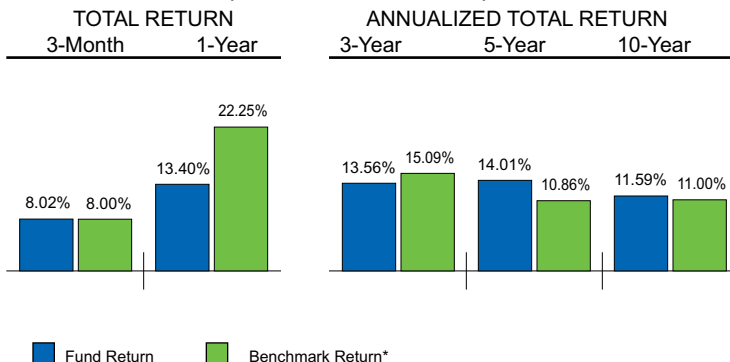


The risk indicator is based on the Fund's asset category. Money market and stable value investments are considered lower risk, fixed-income and balanced fund investments are considered higher risk, and equity investments are considered the highest risk.

LARGEST EQUITY HOLDINGS (as of December 31, 2006)

- 5.5% Electronic Data Systems Corporation
- 4.6% CA, Inc.
- 4.4% Exelon Corporation
- 4.4% Tyco International, Ltd.
- 4.1% Microsoft Corporation
- 3.8% Lennar Corporation
- 3.6% Alcoa, Inc.
- 3.6% FPL Group
- 3.4% St. Paul Travelers Companies, Inc.
- 3.3% J.P. Morgan Chase & Co.

PERFORMANCE (as of December 31, 2006)



*The Russell 1000 Value Index® measures the performance of those Russell 1000 companies with lower price-to-book ratios and lower forecasted growth values. You cannot invest directly in an index.

Figures quoted represent past performance, which is no guarantee of future results.

Investment return and principal value of an investment will fluctuate so that an investor's shares, when redeemed, may be worth more or less than their original cost. Current performance may be lower due to market volatility. These returns include reinvestment of dividends and capital gains. Performance shown for this fund prior to its inception date represents the adjusted historical returns published by Morningstar, which are calculated using the appended adjusted return history of the oldest surviving share class of the fund.

There are additional risks associated with investments in large company stock funds since many of these funds invest in a limited number of issuers and thus may be subject to more risk than a common stock fund with greater diversity.

This information is historical, subject to change and may have changed since the figures were compiled. This information is taken from sources deemed to be reliable, but is not guaranteed as to completeness or accuracy.

Fees and expenses are described in the prospectus. This fund is benchmarked with a market index, which may not match the benchmark in the prospectus. **Read the prospectus carefully before investing.**

Source of data: 2006 Morningstar, Inc. All Rights Reserved. The information contained herein: (1) is proprietary to Morningstar and/or its content providers; (2) may not be copied or distributed; and (3) is not warranted to be accurate, complete or timely. Neither Morningstar nor its content providers are responsible for any damages or losses arising from any use of this information. Past performance is no guarantee of future results.

Redemption fees or other penalties or restrictions for short-term trading activity may apply. Please review the Fund's Prospectus for more information regarding trading guidelines for this Fund.

NOT FDIC INSURED - NO BANK GUARANTEE - MAY LOSE VALUE